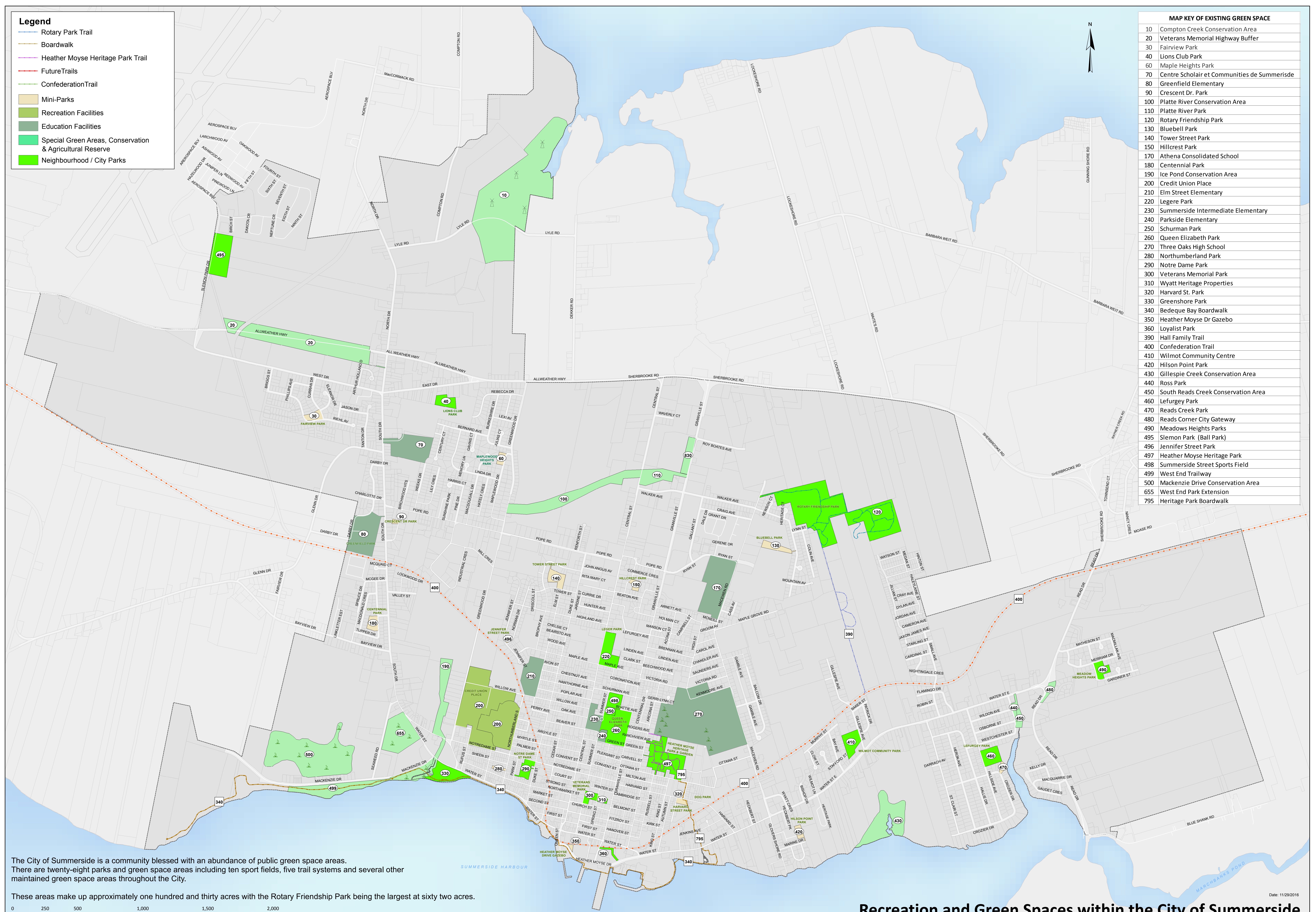


**Legend**

- Rotary Park Trail
- Boardwalk
- Heather Moyle Heritage Park Trail
- Future Trails
- Confederation Trail
- Mini-Parks
- Recreation Facilities
- Education Facilities
- Special Green Areas, Conservation & Agricultural Reserve
- Neighbourhood / City Parks

**MAP KEY OF EXISTING GREEN SPACE**

10	Compton Creek Conservation Area
20	Veterans Memorial Highway Buffer
30	Fairview Park
40	Lions Club Park
60	Maple Heights Park
70	Centre Scholaire et Communies de Summerisde
80	Greenfield Elementary
90	Crescent Dr. Park
100	Platte River Conservation Area
110	Platte River Park
120	Rotary Friendship Park
130	Bluebell Park
140	Tower Street Park
150	Hillcrest Park
170	Athena Consolidated School
180	Centennial Park
190	Ice Pond Conservation Area
200	Credit Union Place
210	Elm Street Elementary
220	Legere Park
230	Summerside Intermediate Elementary
240	Parkside Elementary
250	Schurman Park
260	Queen Elizabeth Park
270	Three Oaks High School
280	Northumberland Park
290	Notre Dame Park
300	Veterans Memorial Park
310	Wyatt Heritage Properties
320	Harvard St. Park
330	Greenshore Park
340	Bedeque Bay Boardwalk
350	Heather Moyle Dr Gazebo
360	Loyalist Trail
390	Hall Family Trail
400	Confederation Trail
410	Wilmot Community Centre
420	Hilson Point Park
430	Gillespie Creek Conservation Area
440	Ross Park
450	South Reads Creek Conservation Area
460	Lefurgy Park
470	Reads Creek Park
480	Reads Corner City Gateway
490	Meadows Heights Parks
495	Slemon Park (Ball Park)
496	Jennifer Street Park
497	Heather Moyle Heritage Park
498	Summerside Street Sports Field
499	West End Trailway
500	Mackenzie Drive Conservation Area
655	West End Park Extension
795	Heritage Park Boardwalk



The City of Summerside is a community blessed with an abundance of public green space areas. There are twenty-eight parks and green space areas including ten sport fields, five trail systems and several other maintained green space areas throughout the City.

These areas make up approximately one hundred and thirty acres with the Rotary Friendship Park being the largest at sixty two acres.

